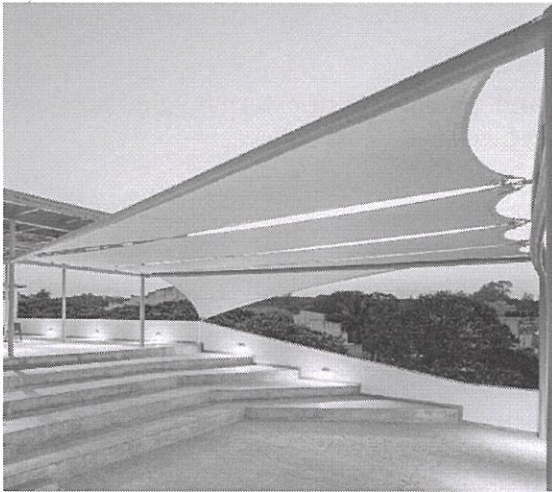
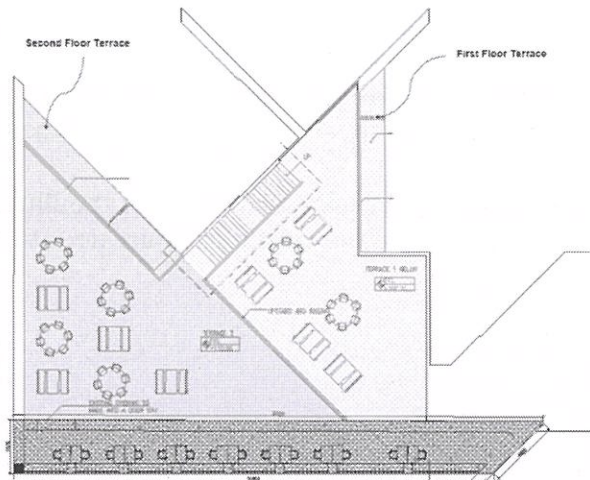


## Sample Tensile Structure



Example of Tensile Structure



Library – Terraces

## Scope of Work

The scope of work includes, but is not limited to, the following:

1. Design and Engineering Phase
2. Fabrication Phase
3. Installation Phase
4. Maintenance Phase

## Area

First Floor Terrace - 2200 sqft

Second Floor Terrace - 2500 sqft

Design, fabrication, manufacturing, assembly, supply & installation of tensile fabric and supporting MS steel structure as per drawing and specification, including scaffolding, dash fasteners, all necessary fixing arrangements, etc. The roofing system must be designed and executed to have proper airtight joints with metal and other surfaces so that the structure is watertight.

1. **Fabric** – Supply and installation of the fabric made of a white polyester translucent membrane. The fabric shall be high-quality 950 gsm PVC coated polyester fibre with 100% PVDF finish to the top surface and PVDF alloy finishes to the bottom surface. Using 902S2 Type-II 950 GSM PVDF coated PVC Fabric (15 years warranty) / equivalent.

2. **Steel Sections** - Supply, fabrication and erection of structural steel tubes, girders, plates etc. All sections shall be IS 1161 YST 240 /310, Box sections IS 4923, plates IS 2062 BR 250. Approved brands shall be TATA / Jindal/ equivalent. Sandblasting as per SA 2.5 and 2 coats of epoxy and 2 coats of PU from Akzo Nobel / Jotun / MRF / Grovel will be applied in 280 microns.
3. **Lights and fans** - Vendor to include supply and installation of external lights fans and required electrical work so that the terrace can be utilized 24 x 7.
4. **Additional Work** – Any areas in the library and library's precinct affected due to the installation of the tensile structure need to be taken care by the shortlisted vendor.